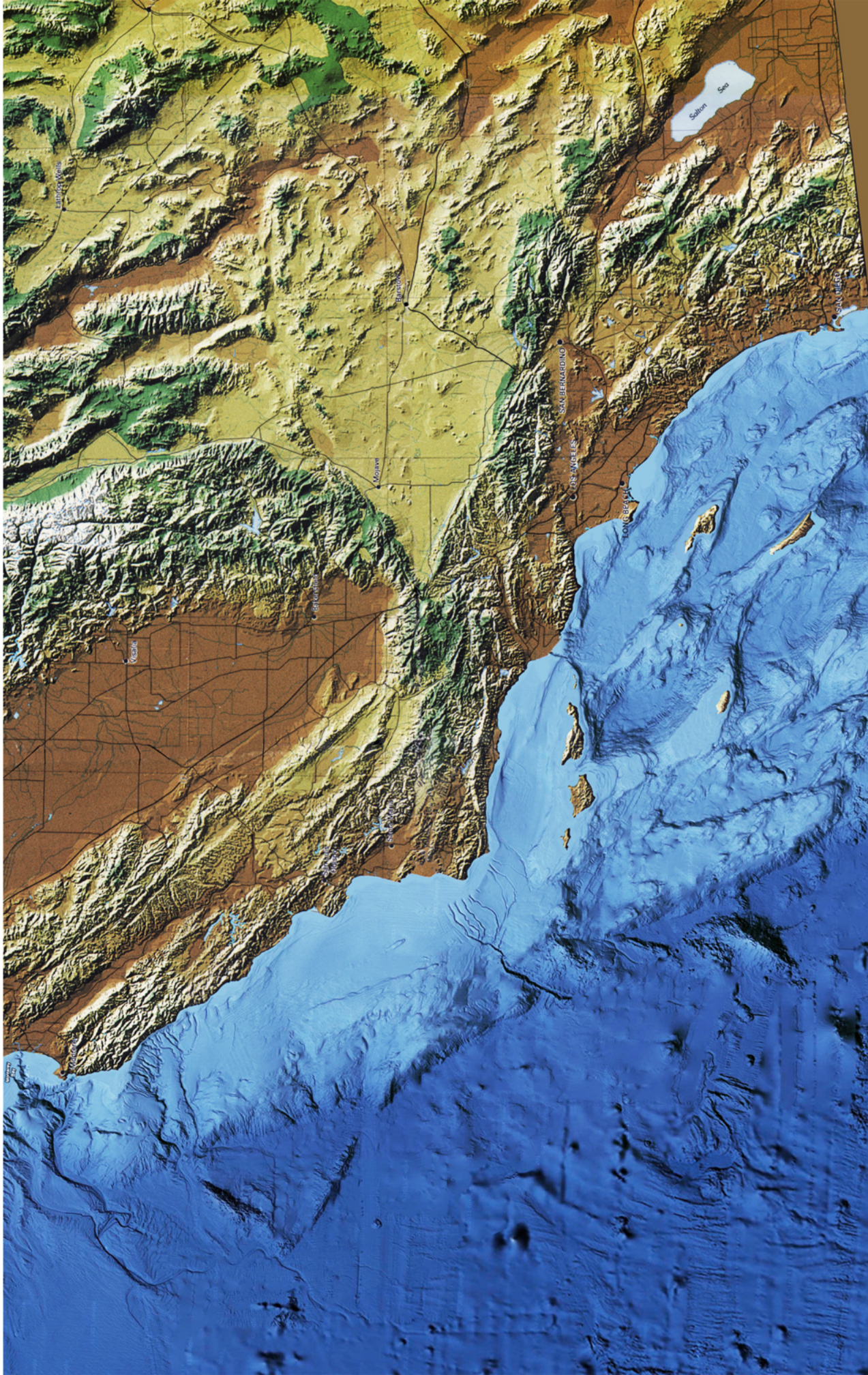


Physiography of So. California and Adjoining Ocean Floor. Note the east-west trending mountains and islands in the region north and northwest of the Los Angeles basin. These delineate the “Transverse Ranges Block”.



Land topography modified after “Experimental Digital Shaded-Relief Maps of Southwestern United States” Kathleen Edwards and R. M. Batson, 1990.
Oceanic bathymetry modified after Google Maps.